

# Komodo®



## PRODUCT CATALOG



**NEW ITEMS**

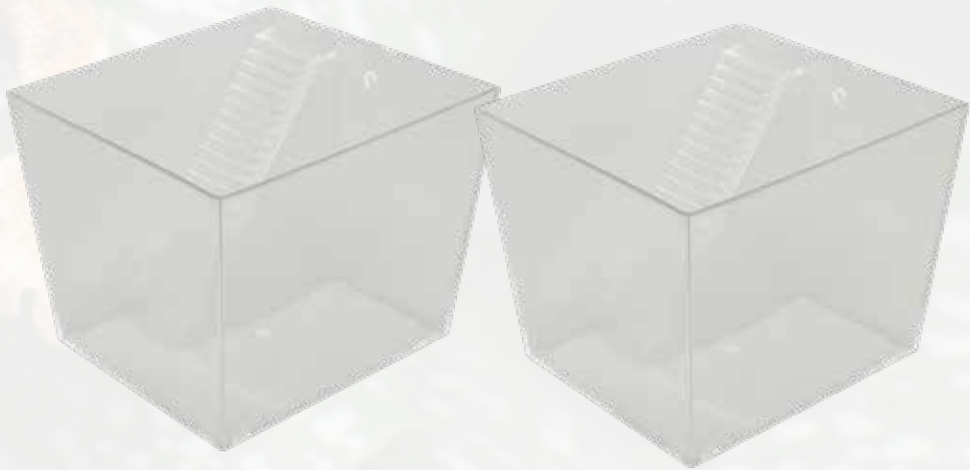
# TANKS & ACCESSORIES

Introducing all new Komodo® tanks and accessories for a range of reptiles! Owners of hermit crabs, bearded dragons, and more will enjoy these new Komodo® items.

## HERMIT CRAB BOWLS 2 PACK

Item#93452

Size: 4.5" x 4.5" X 3.5"



## WOOD ENCLOSURES

Item #68681 - Brown

Item #68680 - Gray

35.4" x 17.7" x 17.7"





## DRIED FLOWERS

Item #93432

Size: 1 oz

Komodo's Reptile Flower Mix combines marigold, rose and dandelion greens to provide a fragrant, colorful topping to a reptile's diet. A great source of vitamins and nutrients for plant-eating reptiles!

## BRANCH HOLDERS

Item #93442

Size: 3.34" x 2.76" x 1.77"

The Komodo® branch holders with suction cups are the perfect solution for securing branches like dragon wood, java wood, and other commercial terrarium branches. Designed for ease of use, they provide a stable and adjustable mounting option to arrange branches in your terrarium without the need for adhesives or drilling.



# FOOD & SUBSTRATE

## PROTEIN JELLY POTS

Item# 93105

Size: 14.8g (0.52 oz)

Introducing all new protein-packed Jelly Pots!  
Made with black soldier fly protein and other vitamins & minerals, these new treats are great for reptiles!

\*Unlike our original Jelly Pots, these are specifically manufactured as a treat supplement for reptiles.



# HABITAT MOSS

Item #93433

Size: 2 oz.

Introducing new Habitat Moss from Komodo®! This moss is a great substrate for tropical and forest tanks, and helps retain moisture to create optimal levels of humidity. This familiar environment provides a soft, long-lasting bedding that's highly absorbent and easy to clean, mimicking the comfort and security of a reptile habitat.



## HOW MUCH MOSS DO I NEED?

See below for how much moss may cover the bottom of a 10 gallon reptile tank:

|        |                |
|--------|----------------|
| 1 BAG  | Light Coverage |
| 2 BAGS | Full Coverage  |
| 3 BAGS | Extra Coverage |

\*DISCLAIMER: This calculation is based on a 5cm depth of moss in a 10 gallon tank. Coverage may vary based on desired depth of moss and positioning in tank.





**ALL ITEMS**

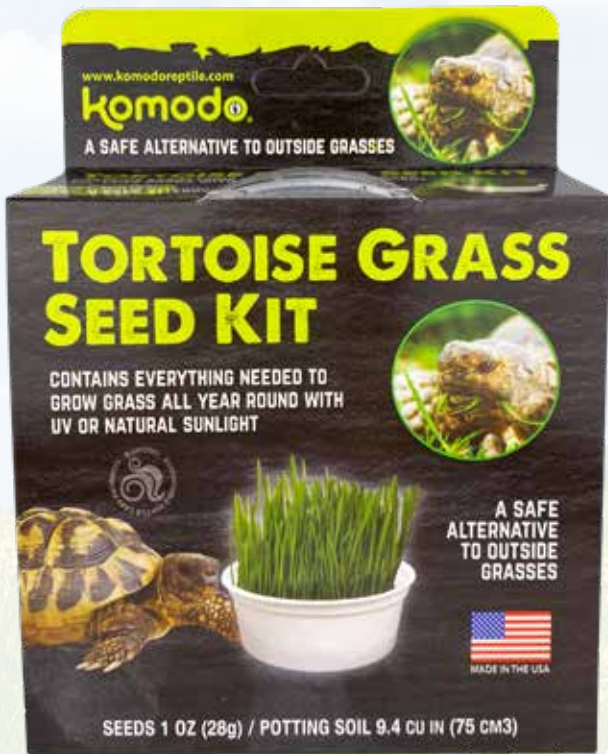
# SEED KITS

There's nothing better than freshly grown treats for reptiles. With these easy to use seed kits, customers can flex their green thumb while also producing some tasty snacks for their tortoise, bearded dragon, or other omnivorous pets.

## TORTOISE GRASS SEED KIT

Item#93181

1 oz



## DANDELION SEED KIT

Item#93180

1 oz



# KOMODO® CACTI

It's time to turn up the heat! These resin replicas are the perfect addition to an animal's enclosure. With textured details and vibrant colors, customers can make their pet's desert environment feel like home. Easy to clean and maintain, these cacti are perfect for reptile enthusiasts of all skill levels.



## PRICKLY PEAR CACTUS

Item#93322

Size: 6.3"

### HEAVY!

All Komodo® Cacti are weighted to prevent tipping!



## BARRELL CACTUS

Item#93321

Size: 4"



## COLUMNAR CACTUS

Item#93320

Size: 5.9"



## **FLOWER CACTUS**

Item#93323

Size: 9"



## **SAGUARO CACTUS**

Item#93324

Size: 9.5"



## **MOON CACTUS**

Item#93325

Size: 7.5"

### **DID YOU KNOW?**

The moon cactus, though often very vibrant, struggles to produce enough chlorophyll to sustain itself for photosynthesis. That is why the moon cactus is typically grafted onto another species of cactus that provides plenty of chlorophyll, allowing the moon cactus to sustain itself for years.

# CLIMBING PLANTS

Komodo® Climbing Plants are made of high-quality silk, giving them a hyper-realistic look to bring life to any pet's enclosure. Available in numerous styles and sizes, these climbing plants are perfect for amphibians, reptiles and even aquatic pets.

## CLIMBING BAMBOO

Item#93300  
Size: 16"

Item#93304  
Size: 24"



## CLIMBING ZEBRINA

Item#93301  
Size: 16"

Item#93305  
Size: 24"



## CLIMBING TWO-TONE

Item#93302  
Size: 16"

Item#93306  
Size: 24"

BEST  
SELLER!

## EASY TO CLEAN!

Regardless of whether a Komodo® Climbing Plant will be in a wet or dry enclosure, the care is simple.

Just follow the steps below:

- Remove from enclosure.
- Submerge in warm water and pet safe dish soap.
- Soak for 10 minutes then rinse with warm water. \*Allow to dry if using for desert reptiles\*

## CLIMBING GREEN LEAF

Item#93303  
Size: 16"

Item#93307  
Size: 24"

### Strong Suction!

Each of our Climbing Plants comes with a powerful suction cup that attaches perfectly to the side of any glass enclosure.



# PLANTS & SUCCULENTS

Give tanks the natural look they deserve with our plants and succulents! Whether customers are trying to achieve a forest inspired enclosure, or a scene straight from the desert, Komodo® has it all!



## WOODLAND CANOPY

Item#93203  
Size: 10"



All our plants contain durable wire in their stems that can be manipulated to achieve any desired look.

## JUNGLE CANOPY

Item#93205  
Size: 10"



## SPIDER ORCHID

Item#93200  
Size: 16"





# GUIANA PLANT

Item#93202  
Size: 27"

Looking for a larger statement piece to add to a pet's enclosure? Then consider snagging some of our large Guiana Plants!



**10 INCH LEAVES!**



## CLEAN ME!

Made of high-quality, durable material, our plants and succulents are easy to clean.

# RAINFOREST CANOPY

Item#93204  
Size: 8"



**BEST SELLER!**



**BEST SELLER!**

# ANTHURIUM BUSH

Item#93201  
Size: 12"

## What A Pretty Name!

The name Anthurium is actually a Greek word meaning "Tail Flower"! This plant is also commonly known as the Flamingo Flower, Hawaiian Heart, and Painter's Palette due to its unique shape.



## SPROUTS

Item#93310

Size: 5"



## CACTUS & SUCCULENT

Item#93311

Size: 5"



## SUCCULENT

Item#93312

Size: 5"



## SUCCULENT 3PKS



Item#93309



Item#93308

# PLANTS

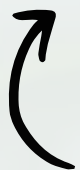
Give tanks the natural look they deserve with our standing plants. Whatever the vibe is, Komodo® has you covered.



## MONSTERA

Item#93373

Size: 18"



Our plants are given a water droplet texture to create a natural, hydrated look!



## WHITE VEIN PLANT

Item#93370

Size: 18"

**CLEAN ME!**  
Made of high-quality, durable material, our plants and succulents are easy to clean.



## SPOTTED BEGONIA

Item#93372

Size: 18"

**GREAT FOR ALL SPECIES!**



## EMERALD VINE PLANT

Item#93371

Size: 18"

# SMALL MONSTERAS



Green Monstera  
Item#93378  
Size: 10"

Vareigated  
Monstera  
Item#93380  
Size: 5"



## CALADIUM

Item#93381  
Size: 5"



## SPOTTED POTHOS

Item#93379  
Size: 5"



## STRING OF HEARTS

Item#93377  
Size: 3.5"

## SMALL WHITE VEIN PLANT

Item#93382  
Size: 4"



## SMALL ZEBRINA

Item#93376  
Size: 3.5"



# BONSAI TREES

Bring pets to a state of Zen with our Komodo® Bonsai Trees. With plenty of space to bask and hide, these trees provide great enrichment for reptiles. Natural-looking rock texture and vibrant leaves help our Bonsai Trees effortlessly beautify any pet's tank.



**Hide in Here!**

## **I'm Durable!**

Our Bonsai Trees are made of heavy, durable resin to ensure longevity in a pet's enclosure.

Perfect for small and medium reptiles or aquatic pets!



## **BONSAI TREE WITH HIDE**

Item#93374

Size: 11.4"

**TRY ME  
IN A  
FISH TANK!**

## **BONSAI TREE**

Item#93375

Size: 9.4"





# HIDES & RESIN DECOR

It's important for pets to feel safe and secure in their enclosure. That's why Komodo® has a range of hides in sizes that cater to all creatures. Whether the use is for functionality or feng shui, these pieces make a great finishing touch to any enclosure. Plus, they're safe for aquatic pets too!

## CORNER HUT



Item#93207  
Size: 6.5"

Item#93318  
Size: 10.5"



Easy for reptiles to climb and bask



### Great For Snakes!

Our Corner Hut is not limited to just aquatic pets! Use this hide for snakes, tarantulas, or other small reptiles.



### CLEAN ME!

Made of high-quality, durable resin, our hides and decor are easy to clean.



**I'm Small!**

Inspired by the trees in the Daintree Rainforest, this hide is perfect for smaller reptiles and amphibians. Measuring only 3.5", smaller creatures will feel safe and secure in this hide.

**DAINTREE FOREST  
NANO HIDE**

Item#93226  
Size: 3.5"



**FOREST LOG**

Item#93230    Item#93231  
Size: 7"                      Size: 9.5"

**KOMODO  
DRAGON**

Item#93237  
Size: 10"



**Did You Know?**

Our Komodo Dragon ornament can be used to encourage natural stacking behavior for juvenile bearded dragons that are seeking a companion.

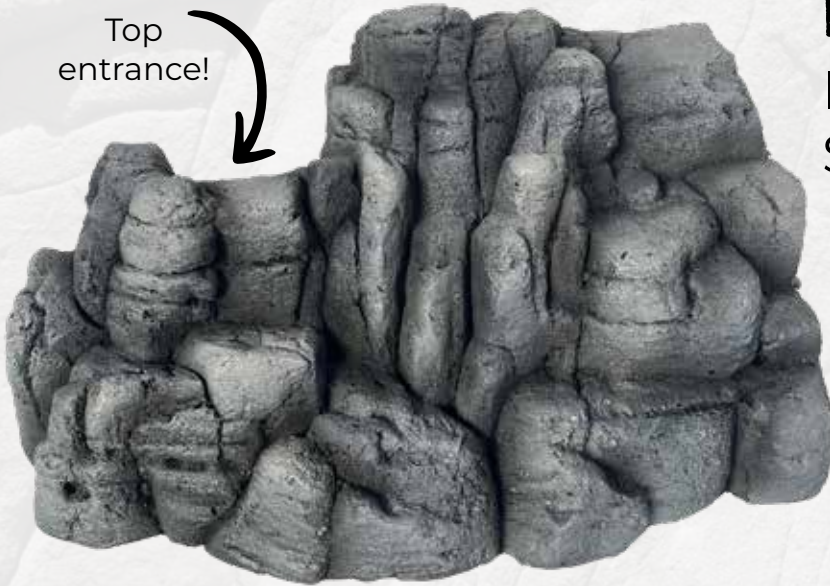
# ROCK HIDES

Komodo's® Rock Hides provide a secure retreat for reptiles, invertebrates, and amphibians. Effortlessly cleanable and crafted to mimic the natural look and feel of rock, it enhances the authenticity and appeal in any terrarium or vivarium.

## ROCK BURROW HIDE

Item#93440  
Size: 10"

Top entrance!



## ROCK LEDGE WITH HIDE

Item#93441  
Size: 7"

**SUPER STRONG MAGNETS!**



Our Rock Ledge Hide includes a mesh backing to keep pets feeling safe and secure!

Our rock ledge is carved from foam and painted to replicate a reptiles natural habitat.



# RESIN SKULLS

Trying to give a pet's enclosure a little edge? Look no further than our resin skulls! Available in a variety of styles and sizes, these skulls are the perfect finishing touch to any tank. They're safe for aquatic pets too.

## T-REX

Item#93214    Item#93216  
Size: 6.5"    Size: 14.5"



## ALLIGATOR

Item#93316  
Size: 9.5"

## RAVEN

Item#93314    Item#93315  
Size: 6"    Size: 8"



# SABER TOOTH

Item#93219

Size: 5"



## DID YOU KNOW?

A saber tooth tiger's teeth could grow to be 8 inches long! Additionally, their jaw could open over 120 degrees. That's twice as large as the modern day big cat!

# RAPTOR

Item#93212

Size: 9.5



# DEER

Item#93221

Size: 8"



# HUMAN SKULL

## FULL

Item#93217

Size: 6.5"



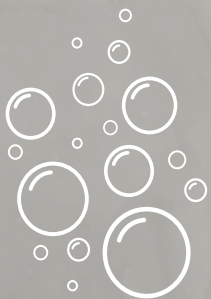
# HUMAN SKULL

## HALF

Item#93218

Size: 6.5"

TRY ME  
IN A  
FISH TANK!



## CLEAN ME!

Made of high-quality, durable resin, our Komodo® Skulls are easy to clean.

# MAGNETIC LEDGES



Our Magnetic Ledges are the perfect space saving ledge for arboreal animals, or they can be placed low for terrestrial species. These ledges are made with strong magnets to lock onto terrarium glass. The realistic rock-like polyresin design will help maintain a naturalistic environment.



Two powerful magnets attach to the outside of tanks, keeping the ledge secure inside!

## BASKING LEDGE

Item#93337  
Size: 10.4"



## FEEDING LEDGE

Item#93336  
Size: 8.6"

Plastic cups are washable and reusable!



### Fill Em' Up!

Our magnetic Feeding Ledge is the perfect way to deliver a reptile's favorite snack, or their daily meal.



# FOOD & ACCESSORIES

Every reptile has specific dietary needs, and that's why all of Komodo's® food and accessories are developed with reptiles and their owners in mind. It doesn't have to be hard to provide reptiles with high-quality food that is easy to use and tastes good too.



## SMART DISH

**BEST SELLER!**

Item#93235

Size: 5.1" x 1.8" x 3.6"

### Escape-Proof!

This multipurpose feeding bowl is perfect for all sizes of mealworm (dry or alive), as well as fresh fruits and veggies. This dish has tall, smooth sides with a lip at the top to prevent live food from crawling out.



## TORTOISE HAY

Item#93170

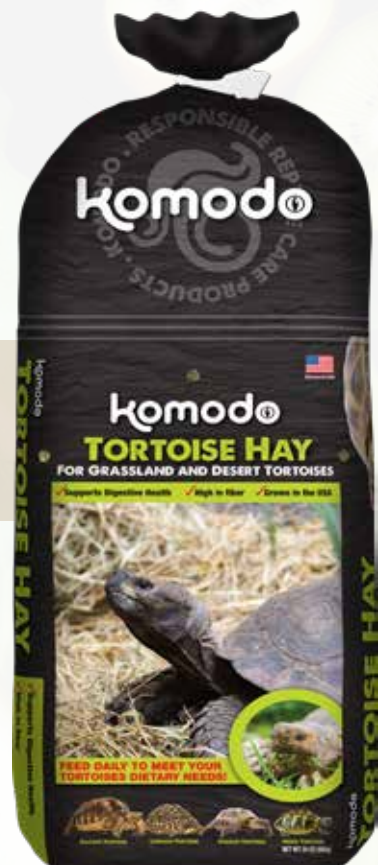
**BEST SELLER!**

Size: 24oz

Many tortoises need hay as part of a healthy diet, and our product is made of the finest second cut Timothy Hay. This type of hay is typically greener in color with tender leaves, making it healthier and higher in protein.



**Packaged in the U.S.A**



# WOOD BOWLS

This durable resin bowl mimics a carved out piece of wood, making it the perfect finishing touch to any natural-looking tank. The realistic bark texture and organic shape of our Wood Bowl will maintain the organic feel of a pet's enclosure while also providing functionality.



Our wood bowls can be filled with food or water! Available in two sizes: Large and X-Large.

## WOOD BOWL

Item#93330 Item#93331  
Size: Lg. - 7.5" Size: X-Lg. - 12"

These bowls are Bearded Dragon Approved!



### Corner Cut!

These natural looking wood bowls are specifically designed to fit perfectly in the corner of enclosures.

We know that a common problem for reptile owners are bowls that keep tipping. Our wood bowls are made from heavy material to prevent moving and tipping inside a pet's enclosure.



# RUBBER DUCK

Item #93400

Size: 14oz



Komodo® has introduced a great way to add some fun into your turtle's daily routine! This floating Rubber Duck will entice your turtle to swim and play with this colorful toy.



# KOMODO® DIETS BEARDED DRAGON

Item#93151

Size: 14oz



Made in the U.S.A

# KOMODO® DIETS AQUATIC TURTLE

Item#93152

Size: 10oz

Resealable bags to help keep food fresh.



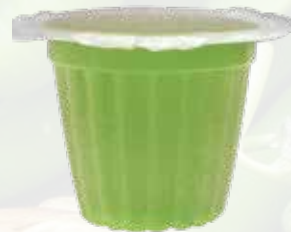
# JELLY POTS | WITH VITAMINS A & C

Komodo Jelly Pots™ are a convenient way to provide well nourished live food for reptiles. Used as part of a balanced diet, Jelly Pots help keep live food healthy, and in turn provides reptiles with nutrient-packed insects.



**BEST SELLER!**

## AVAILABLE IN 4 GREAT FLAVORS!



**MANGO**



**STRAWBERRY**



**BANANA**



**MELON**

## JELLY POTS BOX

Item#93100

Size: 14.8g (0.52 oz)

**BEST SELLER!**

## TWIN JELLY POTS HOLDER

Item#93115

Size: Small

Item#93116

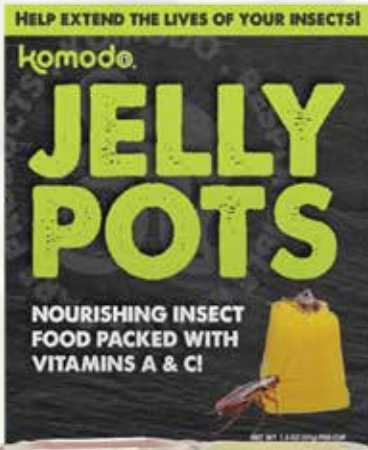
Size: Large



### Strong Suction!

Our Twin Jelly Pots Holder comes with two powerful suction cups that attach perfectly to the side of any glass enclosure.





# JELLY POTS - 20 PACK

Item#93142  
Size: 37g (1.3 oz)



## Stocked & Loaded!

Looking to stock up on pet's favorite treat? This 20 pack of Jelly Pots is sure to keep them satisfied! Available in two great flavors: Strawberry & Banana



↩ The Jelly Pots sold in our 20 pack are 1.3oz per cup, making them 2x larger than our 40ct PDQ size!

## WORKS AS A FEEDER FOR INSECTS OR A TASTY TREAT FOR REPTILES!

### JELLY POTS ROCK DEN

Item#93222 Item#93223  
Size: 6.5" Size: 8"

The Jelly Pots Rock Den is a realistic and functional addition to any pet's enclosure.

This den is perfect to use as a feeder with Komodo Jelly Pots™ because they fit perfectly into the holes. It also doubles as a hideout shelter that keeps reptiles feeling safe.

↩ Attract insects to a reptile's hideout by placing a jelly pot in the top hole of the rock den.



# KEEPERS & HAY

Check out our latest in food and accessories. Whether providing for a reptile that loves crickets or grazing on Wildflower Hay, Komodo® is prepared to meet all your customer's needs.



## CRICKET KEEPERS

Item#93450    Item#93451  
Size: Lg. - 10.6"    Size: Sm. - 7"

### Home is where the crickets are!

Komodo's® Cricket Keepers are designed to house and easily dispense live crickets. Crickets prefer dark spaces and the two black dispensing tubes are designed to attract the crickets and make them easy to remove for feeding without escaping. Pair with Komodo Jelly Pots™ to keep crickets hydrated, alive, and vitamin packed.

Help crickets get the nutrients they need by pairing this keeper with Komodo® Jelly Pots™!

## WILDFLOWER TORTOISE HAY

Item#93175  
Size: 24oz bag



### Hay is for Tortoises!

Komodo's® Wildflower Tortoise Hay supports digestive health, nutrient and fiber rich, and is full of assorted wildflowers that add diversity to a tortoise's diet. Flowers include Marigolds (Calendula), Rose Petals, Hibiscus Flowers, Raspberry Leaves, Chamomile Flowers, Nettle Leaves, Birch Leaves and Blue Cornflowers.





# KOMODO® BEDDING

Komodo® Reptile Bedding gives pets a healthy, comfortable, and natural environment to live in. Our products are 100% natural, and any foreign materials are removed through the max-washed process. These easy-to-use bedding bricks and pads are great at retaining moisture for regulating humid environments.



## COCO COIR PEAT BRICK

Item#93350

Size: 1-pack

Item#93354

Size: 6-pack

**LOW  
DUST  
BEDDING!**



## COCO COIR CHIP BRICK

Item#93351

Size: 1-pack

Item#93353

Size: 6-pack

## HOW TO USE:

1. Remove the brick from packaging.
2. Add water to the compressed hard block and allow to hydrate and expand.
3. Break up and lay on base of terrarium.



**PLEASE RECYCLE**

All Komodo® Bedding packaging is compostable and biodegradable.



# COCO COIR PEAT & CHIP COMBO PACK

Item#93352  
Size: 6-pack

## Use What's Needed!

Our smaller cut, 6-pack bricks are perfect for encouraging customers to only use what they need. This can help prevent mold by saving unused substrate.

## MIX IT UP!

We know not all reptiles have the same needs. By using our Coco Coir Peat & Chip Combo pack, customers can achieve the perfect mix of substrate for their reptile.

# FIBER PADS



## COCO COIR FIBER PADS

Item#93355

Size: 10" x 20"

Item#93356

Size: 12" x 30"

Item#93357

Size: 18" x 36"

WASH ME  
AND  
REUSE!

## HOW TO USE:

1. Remove the roll from packaging.
2. Unroll pad and re-roll in opposite direction to help flatten.
3. If necessary, cut pad to desired tank size and lay on base of terrarium. When soiled, wash pad in water and reuse.

# LEAF LITTER

Komodo® new leaf litter is a versatile addition to a pet's vivarium. It offers shelter for microfauna and larger inhabitants like frogs and lizards. As it breaks down, it provides organic nutrients for microfauna and plants.



## OAK LEAF LITTER

Item#93431

Size: 50pc bag

The large size of these oak leaves make them a great choice for reptile owners looking to cover a lot of surface area at the base of their pet's enclosure.

### What is Leaf Litter?

Reptile owners know that leaf litter is a key ingredient when creating a successful bioactive terrarium for their pet. At its core, leaf litter is just dried leaves, but it serves a significant purpose. Small critters like isopods are often placed in bioactive enclosures, and the fungus and bacteria that develops on leaves provides an excellent food source for them. Leaf litter can also be used for decoration in non-bioactive enclosures to achieve a naturalistic look!

## LONGAN LEAF LITTER

Item#93430

Size: 50pc bag



Longan leaves are native to tropical Asia and China. Consider placing these leaves in a python or skink's enclosure.



# SPRAY BOTTLES & CLEANERS

## KOMODO-SAN CLEANER & DEODORIZER

Item#93295  
Size: 16 fl/oz



### Simply Spray & Wipe Away!

Komodo-San spray is a ready-to-use formula for cleaning and sanitizing a reptile's tank. The spray can be used on washable, hard, nonporous surfaces to deodorize and disinfect.

## KOMODO® BASE CAMP CLEANER

Item#93281  
Size: 16 fl/oz



Fast drying and streak-free formula leaves glass sparkling.

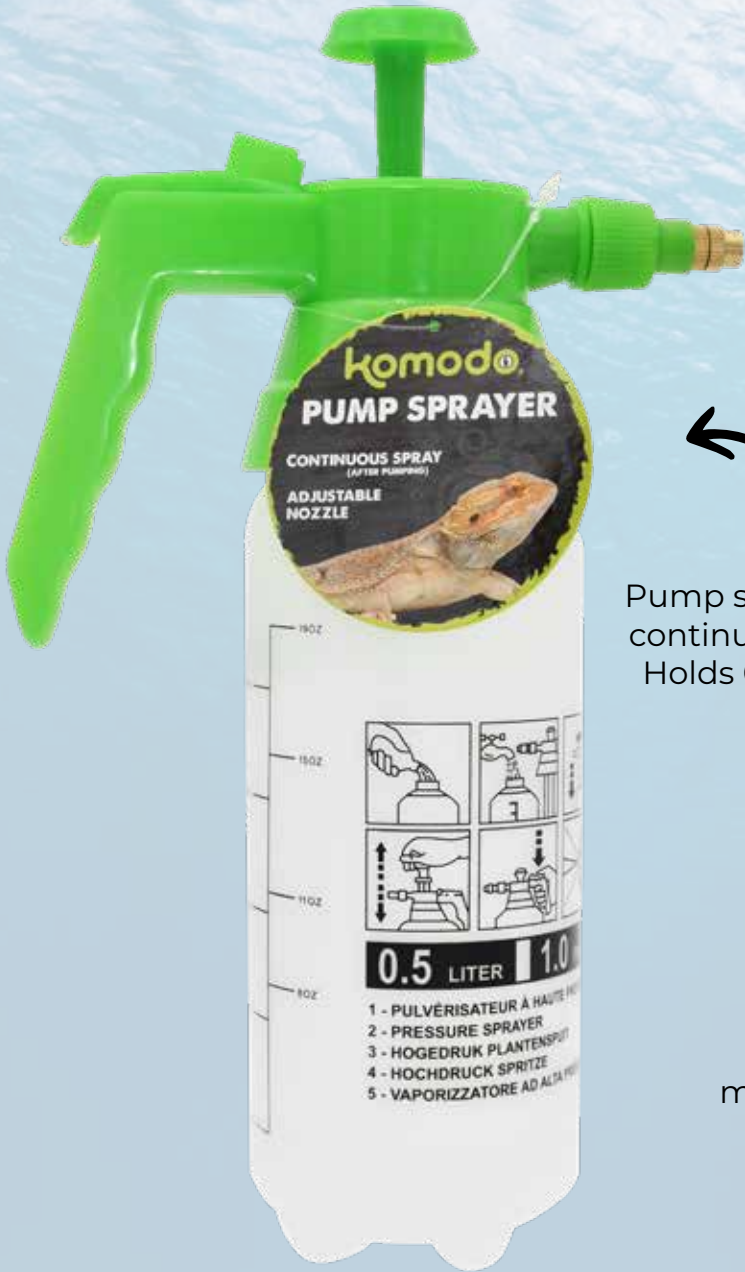


### Simply Spray & Wipe Away!

Our Base Camp cleaner is an all-natural tank cleaning solution that contains vinegar for a deep down clean. It is free of harsh chemicals and solvents and leaves no residue making it completely reptile safe.

# KOMODO® PUMP SPRAYER

Item#93405  
Size: 16 fl/oz



Pump sprayer for continuous mist!  
Holds 0.5 Liters



Perfect for misting plants!



# SPRAY BOTTLE

Item#93236  
Size: 18.6 fl/oz



## Moisture Matters!

Most reptiles and amphibians require frequent misting as part of their daily upkeep. Our Komodo® Spray Bottle is perfect for keeping pet tanks moist to maintain ideal conditions.